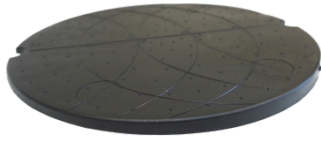


Operations & Maintenance Manual

Non Fire Rated Fixed Height Pedestal

**3-8mm Fixed
Height Pedestal**



SP-RUB-003-Z

**5mm Fixed
Height Pedestal**



SP-RUB-005-Z

**9mm Fixed
Height Pedestal**



SP-RUB-009-Z

7mm Fixed Height Pedestal



SP-RUB-007-PAVING-Z

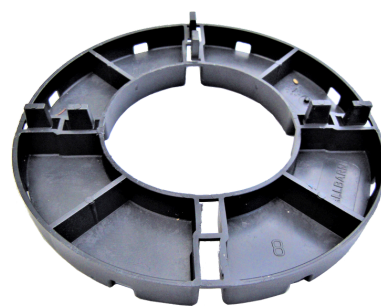


SP-RUB-007-DECKING-Z

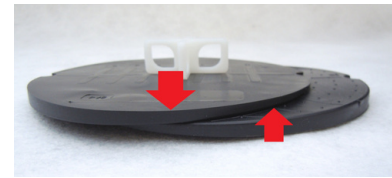
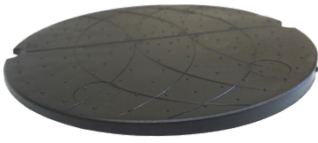
14 & 17mm Fixed Height Pedestal for Paving or Decking



SP-PLA-014-Z



SP-PLA-017-Z



3-8mm Pedestal

Product Description

Fixed circular PVC pads in a wedge shape that runs from 3mm to 8mm. It is designed for tricky areas such as very low finished floor levels rather than being used across a whole project. The circular pads allow the roof to be ventilated and at the same time provides easy access for inspection.

By using two of these pads together you can adjust the height from 3mm to 8mm and these heights are marked on the flat surface of the pedestal

Application

Two of the fixed height pedestals should be used together to achieve ultra low height support for paving or decking. By moving the wedges further apart you can achieve 3mm support or when pushed together, achieve a support height of 8mm. Installation in external areas helps to protect the waterproof surface or membrane.

Design

Each PVC pad is circular, measuring 150mm in diameter with a wedge shape which is 3mm at it's lowest point and 8mm at it's highest. The cross spacer is made from polypropylene and is available in thicknesses of 3, 4 or 5mm. The cross spacer is not fixed to the PVC pad.

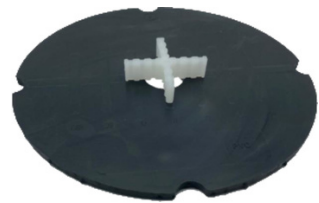
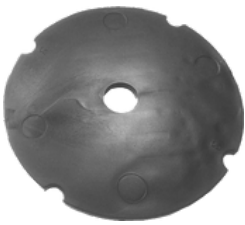
Technical Data

Material	PVC
Thickness	Wedge shape going from 3mm to 8mm
Outer Diameter	150mm
Weight Tolerance/ Bearing Capacity	8,000Kg
Appearance	Spherical guidelines and height markings
Optional Accessory - Cross Spacers	
Width of Cross Spacers available	3mm, 4mm & 5mm
Cross Spacer Height	10mm

Wallbarn Ltd
Unit 16 Capital Business Centre
22 Carlton Road, South Croydon. CR2 0BS

IMS.T.1085.v2

Phone : 0208 916 2222 Email : sales@wallbarn.com Website : www.wallbarn.com



5mm Pedestal

Product Description

Fixed circular PVC pads designed to provide a minimum amount of height from the surface when installing timber decking and paving systems. A separate loose cross spacer can be placed on the top surface to provide the symmetrical and tight fitting for the paving system. For both timber decking and paving, the circular pads allow the roof to be ventilated and at the same time provides easy access for inspection.

Application

The PVC pads can be laid on all secure and stable floor surfaces allowing inspection under slabs or decking without demolition. Installation in external areas helps to protect the waterproof surface and allows for the practical use of a terrace.

Design

The PVC pad is circular measuring 150mm in diameter with a smooth, flat base and upper surface. It is 5mm in height. The cross spacer is made from polypropylene and is available in a variety of thicknesses. The cross spacer is not fixed to the PVC pad.

Technical Data

Material	PVC
Thickness	5mm
Outer Diameter	150mm
Weight Tolerance/ Bearing Capacity	8,000Kg
Appearance	Flat Disc both sides
Optional Accessory	
Width of Cross Spacers available	3mm, 4mm & 5mm
Cross Spacer Height	10mm



9mm Pedestal



Product Description

The 9mm Rubber Paving Support Pads are manufactured into a circular ring with a hollow centre. They are made from a compound of synthetic and natural rubber thereby offering the distinct advantages of being flexible and easy to cut.

Application

They are ideal for installation directly onto delicate surfaces such as insulation or single ply. They are extremely durable with a weight tolerance of eight tonnes. No mechanical fixing is required as the surface is secured by the weight of the slab or covering. Combined with Wallbarn Levelling Shims, fine adjustments to height can be made.

Design

The Pads are designed to be tough yet flexible and durable. They have a rounded edge to prevent any dentation into the waterproofing membrane beneath and offer sound and vibration insulation. The lugs ensure clear and regular separation of the paving slabs. Drainage channels of 5mm wide on the underside of the pad allow for drainage.

Technical Data

Material	Synthetic/Natural Rubber Compound
Thickness	9mm
Lug Width (Gap between Paving Slabs)	5mm
Lug Height	9mm
Weight Tolerance/ Bearing Capacity	8,000Kg
Outer Diameter	120mm
Inner Diameter	55mm
Number of Drainage Channels	8
Width of Drainage Channels	4mm per Channel

Wallbarn Ltd
Unit 16 Capital Business Centre
22 Carlton Road, South Croydon. CR2 0BS

IMS.T.1085.v2

Phone : 0208 916 2222 Email : sales@wallbarn.com Website : www.wallbarn.com



7mm Pedestal

Product Description

Ultra-thin PVC pads 7mm in height for paving and timber decking that provide adequate drainage by lifting the slabs and joist frame from the deck. For paving there is a lugged headpiece that sits into a slight indent which is moulded into the PVC pad so that the overall height of the pad remains 7mm. Similarly, for timber decking there is a lugged headpiece into which the joist frame will sit. There is also an alternative TD plus headpiece where installers can screw the timber joist in place through the side bars for secure fitting.

Application

The PVC pads can be laid on all secure and stable floor surfaces allowing inspection under slabs or decking without demolition. Installation in external areas helps to protect the waterproof surface and allows for the practical use of a terrace.

Design

The PVC pad is circular measuring 150mm in diameter. The upper surface is moulded into a series of circular ridges and grooves which encourage rainwater to run off the surface of the pad. No mechanical fixing is required as the weight and stability of the paving and timber decking joist frame will hold everything securely in place.

Technical Data

Material	PVC
Thickness	7mm
Outer Diameter	150mm
Weight Tolerance/ Bearing Capacity	8,000Kg
Paving Headpiece (Lug Width)	2.2mm standard width (4, 6, 8 & 10mm available)
Decking Headpiece (distance between lugs)	60mm
Lug Height	15mm
Drainage Channels	6

Wallbarn Ltd

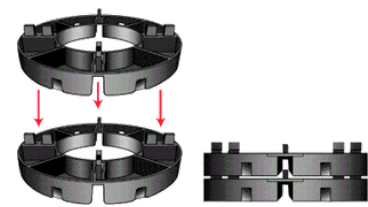
IMS.T.1085.v2

Unit 16 Capital Business Centre
22 Carlton Road, South Croydon. CR2 0BS

Phone : 0208 916 2222 Email : sales@wallbarn.com Website : www.wallbarn.com



14 & 17mm Pedestal



Product Description

Fixed supports made from HDPE designed to raise paving slabs or timber joists off the deck, allowing the roof to be ventilated and leave easy access for inspection.

Application

Each support is a single piece which is easily divided into four parts where particular shapes are required. Quadrants and semi circles can be created. A timber joist can be inserted between the four lugs in the centre of the pad to support timber deck boards. Tiles or paving slabs can be placed directly onto the pedestals to create a suspended paving system.

Design

Each support is a single piece which is easily divided into four parts where particular shapes are required. Quadrants and semi circles can be created. A timber joist can be inserted between the four lugs in the centre of the pad to support timber deck boards. Tiles or paving slabs can be placed directly onto the pedestals to create a suspended paving system.

Material	HDPE
Heights	14mm & 17mm
Lug Height	10mm
Lug Width	4mm
Outer Diameter	150mm
Inner Diameter	80mm

	Score	Test Method
Weight tolerance	1,000kg	
Melt Flow rate	14-16 Gr/10'	ASTM D 238
Weight / density	0.99-1.04 Gr/cm³	ASTM D 792 Method A
Softening point with load of 5kg (VICAT test)	> 75 °C	ASTM D 1525

Wallbarn Ltd
 Unit 16 Capital Business Centre
 22 Carlton Road, South Croydon. CR2 0BS

IMS.T.1085.v2

Phone : 0208 916 2222 Email : sales@wallbarn.com Website : www.wallbarn.com



14 & 17mm Pedestal cont'd

	Score	Test Method
Heat Deflection Test with load of 1820 kPa	> 90 °C	ASTM D 648
Coefficient of elasticity	1600 Mpa	ASTM D 790
Impact resistance (Izod test - at 23°C)	>40 J/m	ASTM D 256
Impact resistance (Izod test - at minus 20°C)	>20 J/m	ASTM D 256
Fire Rating	EUROCLASS E	EN 13501-1:2009

Product Installation

These pedestals are designed for use on predominantly flat decks and are suitable for flat roofs, podium decks, balconies, terraces, and walkways that have a minimal fall for drainage.

They should be placed on structural decks that are sufficiently strong enough to support the weight of the system. It is important to ensure that waterproofing membranes are adequately protected before the installation of paving or decking systems, to prevent point loading and/or puncturing of the membrane.

Pedestals are typically loose-laid without mechanical fixings or adhesive, allowing them to move independently from the structural building and prevent stress points.

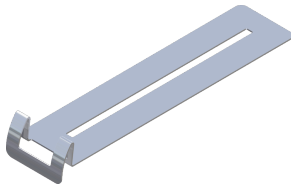
The placement of pedestals depends on various factors, and Wallbarn Technical staff are available to provide advice on recommendations based specifically on your project.

Other Accessories

There are a number of accessories that can be used with our pedestals, such as edge plates, levelling shims, Cross Spacers, Acoustic pads or profile edge plates. The use of these are dependent on your project's detail. The Wallbarn Technical Team will be able to advise on the use of these.

Other Accessories cont'd

Metal Edge Plate



SP-EDGE-PLATE-Z

1mm & 2mm Shim



SP-PLA-001-SHIM-Z
SP-PLA-002-SHIM-Z

3mm Shim



SP-PLA-003-SHIM-Z

2.5mm Shock Absorbing Shim



SP-RUB-0025-Z

5mm Acoustic Pad



SP-RUB-005-AC-Z

3mm, 4mm & 5mm Cross Spacers



3mm

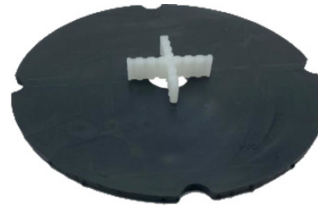
SP-PLA-003-CROSSPACER-Z

4mm

SP-PLA-004-CROSSPACER-Z

5mm

SP-PLA-005-CROSSPACER-Z



Maintenance Details

The pedestals are designed for long-term coverage without disturbance. It is essential to keep gaps between paving slabs or decking boards clear of debris to ensure proper drainage of the upper surface and prevent ponding and slip hazards.

The cavities between the structural subdeck and the surface material (paving or decking) should be inspected regularly, at least once per year, to make sure that drainage channels remain unblocked and that flammable materials do not accumulate. Jets of water should be used to clear limited amounts of debris, taking care to avoid blocking or damaging drainage outlets.

For significant or compacted debris build-up, it may be necessary to remove the upper surface (paving or decking system) to clear the debris effectively. If needed, this removal should be carried out using machines.



Hazards Identification

The major hazards identified for these products are physical and include manual handling.

First Aid Measures

In event of cuts or injury, wash out wound with plenty of clean water. Seek medical attention.

Fire-Fighting Measures

These products do not constitute a fire hazard. Use extinguishing media appropriate to the surrounding fire conditions.

Accidental Release Measures

Damaged product can be taken up and disposed of to landfill as inert waste if necessary; however recycling is the preferred method of disposal. As supplied, the products are not classified as hazardous.

Handling & Storage

When handling the pedestals, due regard should be paid to the risks outlined in the Manual Handling Operations Regulations 1992. Appropriate PPE should be used.

If cutting the base of the pedestal with a saw, appropriate measures to control dust and debris should be used. The product should be stored in a safe place out of strong weather conditions.

Wear suitable protective clothing e.g. overalls, gloves and safety boots to reduce the chances of physical injury while using this product.

Ecological Information

Subsequent to manufacture, this is a stable product with no known adverse environmental effects.

Disposal Considerations

Dispose of this product at any approved solid waste disposal site but recycling is best and recommended method of disposal. Wallbarn Fixed Height Pedestals are made from a variety of materials, including Polypropylene, Rubber, HDPE and PVC. Disposal of these product should be in accordance with any local or national regulations although recycling is preferred.



WARRANTIES

A Limited Warranty exists that the products will comply with the test data as laid out in this document for a period of 15 Years. Warranty is limited to replacement of products which have been installed in the correct manner and for the correct purpose only. Warranty is limited to the value of the cost price of the materials only, not replacement costs or any other labour cost.

Under no circumstances shall Wallbarn Ltd be held responsible or liable for any incidental, consequential, indirect, special, punitive or any other damage (including, but not limited to, loss of profits, loss of sales, loss of start-up, loss or reduction of work).

This Limited Warranty covers our pedestals on condition that the Installation and Care & Maintenance Instructions are followed, and are installed according to Wallbarn Ltd guidelines.

See Terms and Conditions of the Warranty and Scope of the Guarantee below for other exclusions and limitations of this Warranty.

1) WARRANTY TERMS AND CONDITIONS

1.1 Complaints are physically examined by Wallbarn Ltd.

1.2 Complaints / claims should be filed in writing to Wallbarn Ltd.

1.3 Proof of purchase for the pedestals should accompany the written complaint / claim. Complaints / claims without the appropriate documentation will not be considered.

1.4 The company examining complaints (or its representatives) reserves the right to check the pedestals in the place of installation, the manner they have been installed and obtain details of the care and maintenance programme carried out before giving considering to the complaint/claim.

1.5 The complaint / claim is only valid if the products are installed in the territory that the original purchase was made.

1.6 Wallbarn Ltd reserves the right to either repair the defect or to offer material free of charge to the customer.

The above guaranteed lifetime of the pedestal exists only where the Products have been installed in the correct and proper manner.



2) VISUAL APPEARANCE WARRANTY ON DELIVERY

Each pedestal is carefully inspected by our quality control team personnel prior to leaving our factory to ensure they are defect free. We urge Customers and the installers to inspect each pedestal prior to installation. This Limited Warranty does not extend to cover defects in pedestals on delivery after installation has taken place.

3) SCOPE OF GUARANTEE

3.1 This guarantee is issued in accordance with and is subject to the laws of England & Wales.

3.2 Obvious defects in the pedestal should be communicated to the supplier within 30 days from the delivery date of goods on site/warehouse. Claims regarding obvious defects after this period will not be considered.

3.3 To be able to make use of the Warranty the product – Mega Balance Pedestals- must be installed according to the Installation Instructions. Use fixings recommended and approved by Wallbarn Ltd as indicated in the appropriate technical documentation. The use of other types of fixtures not provided or approved by Wallbarn Ltd invalidates this Warranty.

3.4 If a claim is granted before installing the material, faulty pedestals are replaced free of charge.

3.5 No claims can be accepted after installing the material if the buyer could have detected the defects before installation. This Warranty does not cover damage caused by third parties before installation.

TRANSPORT INFORMATION

The best method of transportation is strapped securely onto pallets.



KEY CONTACTS

Wallbarn Ltd.

Unit 16 Capital Business Centre,
22 Carlton Road,
South Croydon CR2 0BS

Tel: +44 (0)20 8916 2222

Fax: +44 (0)20 8916 2223

Email: sales@wallbarn.com

Web: www.wallbarn.com

The following table summarizes the products referenced in this document:

Product	URL
Fixed Height Pedestal Range	https://www.wallbarn.com/pedestals-2/self-levelling-heavy-duty/
Pedestal Accessories Metal Edge Plate Acoustic Pad Shims Cross Spacers	Links https://www.wallbarn.com/pedestals-2/metal-edging-plate/ https://www.wallbarn.com/pedestals-2/rubber-crumb-acoustic-pad/ https://www.wallbarn.com/pedestals-2/pedestal-accessories/shims-for-pedestals/ https://www.wallbarn.com/pedestals-2/pedestal-accessories/cross-spacers/
Wallbarn Ltd Terms & Conditions	https://www.wallbarn.com/substructure/plastic-pedestal-substructure-system/

Wallbarn Ltd
Unit 16 Capital Business Centre
22 Carlton Road, South Croydon. CR2 0BS

IMS.T.1085.v2

Phone : 0208 916 2222 Email : sales@wallbarn.com Website : www.wallbarn.com



LIMITED WARRANTY

Wallbarn Ltd provides a limited warranty of 15 years for products. This Warranty corresponds to the performance and strength characteristics given in the published technical datasheets.

Wallbarn Ltd warranties that, under normal use and service conditions, and where the products have been installed in the proper manner, Wallbarn Ltd products shall be free from material defects in workmanship and materials, shall not crack, splinter, swell, rot or suffer structural damage from damp or fungal decay.

If a defect occurs within the Warranty Period, the Purchaser shall notify Wallbarn Ltd in writing and, after investigation and confirmation of the defect(s) by a Wallbarn Ltd representative, Wallbarn Ltd's sole responsibility shall be limited to replacement of the affected products or to refund the Purchaser up to the maximum value of the Sales Invoice.

This warranty is null and void if:

- The products are not installed in the proper manner as detailed in official Wallbarn Ltd product catalogues, installation guides and technical datasheets.
- The products are not used for the purposes they are intended, as detailed in official Wallbarn Ltd product catalogues, installation guides and technical datasheets.
- Excessive weights, higher than the maximum weight as detailed in official Wallbarn Ltd product catalogues, installation guides and technical datasheets are placed onto the products.
- The products are installed in contravention of any relevant building regulations, code or standards.
- Any relevant building regulations, code or standards, including fire safety regulations are breached on the project during the construction process.
- There is movement, distortion, collapse or settling of the supporting structure on which Wallbarn Ltd products are installed.
- Any abnormal natural event such as flooding, hurricane, earthquake, lightning, etc., occurs.



Wallbarn Ltd – Limited Warranty

This limited warranty does not cover any living product or any product which sustains life. This includes sedum and other plants and substrate mixes for M-Tray® and any other green roof system. The living and growing elements of M-Tray® and other green roof systems are specifically excluded from this Warranty.

This Warranty is limited to the maximum amount of the Sales Invoice and Wallbarn Ltd is not liable for any costs of examination, removal or installation of products. Wallbarn Ltd will not be responsible for any costs or expenses incurred during removal and replacement, including labour or transport costs.

This warranty is given only if the products are used for the purposes they are intended, as detailed in official Wallbarn Ltd product catalogues, installation guides and technical datasheets and are installed in the correct manner.

To make a claim under this Limited Warranty, the Purchaser should contact Wallbarn Ltd with a full report of the defects within the Warranty Period, including photographic evidence and proof of purchase. Any claim should be made to sales@wallbarn.com as soon as possible by the Purchaser.

Our Terms & Conditions of Supply can be found here
<https://www.wallbarn.com/terms-conditions-of-supply/>

Wallbarn Ltd
Unit 16 Capital Business Centre
22 Carlton Road, South Croydon. CR2 0BS

IMS.T.1085.v2

Phone : 0208 916 2222 Email : sales@wallbarn.com Website : www.wallbarn.com