



Wallbarn - Technical Datasheet Geotextile PECT

Recycled nonwoven geotextile made with polyester for filtration, separation, protection and drainage.

Physical Properties			150	200	250	300	350	400	500	600	700	800	1000	1200	1500
Mass per unit area [EN ISO 9864]	g/m ²		150	200	250	300	350	400	500	600	700	800	1000	1200	1500
Thickness [EN ISO 9863-1]	mm		1.0	1.2	1.4	1.6	1.8	2.0	2.3	2.6	2.9	3.3	4.0	4.5	6.4
Mechanical properties			150	200	250	300	350	400	500	600	700	800	1000	1200	1500
Tensile strength [EN ISO 10319]	MD	kN/m	1.0	1.6	2.0	2.4	2.8	3.2	4.0	5.4	6.7	8.0	10.0	12	15
	CMD	kN/m	1.0	1.6	2.0	2.5	3.0	3.4	5.0	7.4	9.0	10.5	13.5	15	20
Elongation at max.load [EN ISO 10319]	MD	%	50	50	50	50	50	50	60	60	70	70	80	80	90
	CMD	%	60	60	60	60	60	60	60	60	70	70	80	80	90
Energy absorption index [EN ISO 10318]	kJ/m ²		0.3	0.4	0.6	0.7	0.8	0.9	1.4	1.9	2.7	3.2	4.7	5.4	7.9
Static puncture resistance [EN ISO 12236]	kN		0.2	0.3	0.4	0.5	0.6	0.8	1.2	1.8	2.2	2.6	4.2	5.0	6.0
Dynamic puncture resistance [EN ISO 13433]	mm		>50	46	40	36	32	24	14	10	8	6	2	2	0
Pyramidal puncture resistance [EN 14574]	N		-	200	300	400	450	500	600	800	950	1100	1500	1700	2000
Hydraulic Properties			150	200	250	300	350	400	500	600	700	800	1000	1200	1500
Permeability normal to the plane [EN ISO 11058]	mm/s		90	90	70	60	60	50	30	30	25	20	10	10	10
In-plane flow capacity [EN ISO 12958]	10 ⁻³ l/ms		1.6	2.1	2.3	2.7	3	3.2	5	7	7	8	9	9	9
Characteristic opening size [EN ISO 12956]	µm		65	60	55	55	55	45	45	35	35	35	30	30	20

µm = Micrometre

mm/s = Millimetre per second

kJ/m² = Kilojoule per square metre

MD = Machine Direction/Longitudinal

kg/dm³ = Kilogram per cubic decimetre

kN = Kilonewton

mm = Millimetre

g/m² = Gram per square metre

kN/m = Kilonewton per metre

⁻³l/ms = Cubic metre per millisecond

CMD = Cross Machine Direction/Trasversal

The values given are an average obtained in internal labs and official independent testing institutes. The right is reserved to make changes any time without notice.

Wallbarn Ltd

Unit 16 Capital Business Centre

22 Carlton Road, South Croydon. CR2 0BS

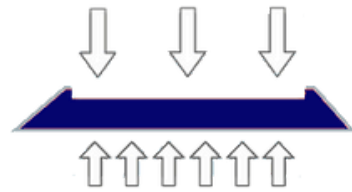
Phone : 0208 916 2222 Email : sales@wallbarn.com Website : www.wallbarn.com

IMS.T.1050.v1



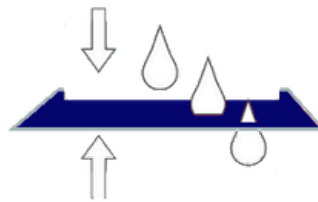
Wallbarn - Technical Datasheet

MAIN FUNCTIONS



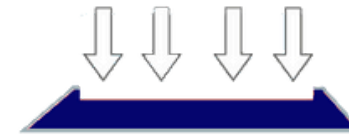
SEPARATION

Separation & retaining of soil and/or filling materials to stabilise groundworks



FILTRATION

Retaining soil or other particles while allowing the passage of moisture



PROTECTION

Preventing compression or puncture damage to delicate membranes beneath

Key Features:

- Nonwoven geotextile made with polyester, needle punched and calandered.
- Produced **without using of any glues or chemical binders** and postconsumer raw material.
- Ideal as a separation, filtration or protection membrane on domestic projects.
- Made from recycled, multi-coloured, polyester fibre.
- Specific weight of polymer is 0.38 kg/dm³.

The durability forecast is for a minimum of 5 years in natural ground with a 4<pH<9 and soil temperature < 25°C.



Wallbarn Ltd

Unit 16 Capital Business Centre

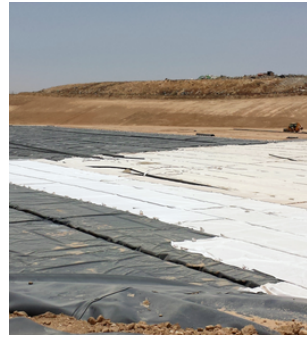
22 Carlton Road, South Croydon. CR2 0BS

Phone : 0208 916 2222 Email : sales@wallbarn.com Website : www.wallbarn.com

IMS.T.1050.v1



Wallbarn - Technical Datasheet



**Roads, Railways &
Heavy Traffic Areas**

**Landfill for Solid &
Liquid Waste**

Roofing



Wallbarn Ltd

Unit 16 Capital Business Centre
22 Carlton Road, South Croydon. CR2 0BS

Phone : 0208 916 2222 Email : sales@wallbarn.com Website : www.wallbarn.com

IMS.T.1050.v1