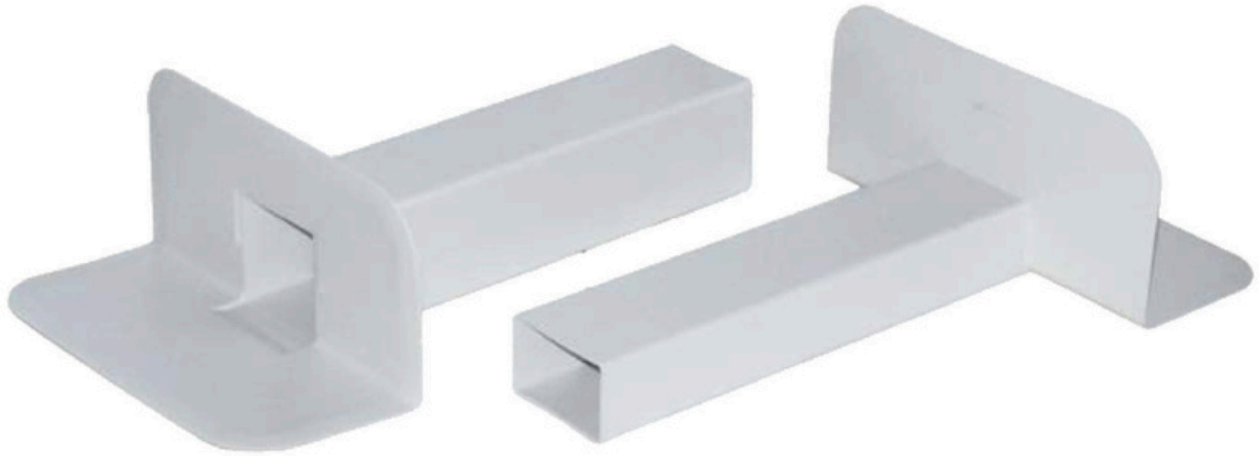




Wallbarn - Technical Datasheet

PVC Corner Outlet (Smooth Flange): Rectangle



RO-PVC-120-310-100-100-Z

RO-PVC-120-310-065-100-Z

Product Description

Through wall / corner fittings are designed to be welded to synthetic PVC roofing membranes around rainwater roof drains up to a wall / parapet. They have a square or rectangular mouth. The flange is soft and floppy and easy to manipulate. It is slightly inclined back from the face towards the shank to help create a secure seal.

The flange is smooth throughout the bond and welding should only be carried out with a hot air gun, not a naked flame. They are available with either a 65x100 mm rectangular mouth or with a 100x100 mm square mouth. Always prime the outlet and membrane before installation.

Compatibility

They are compatible with single ply / PVC sheet membranes.

Performance

Resistant to deterioration by the sun, ozone and normal atmospheric conditions. They have excellent flexibility even at low temperatures and will not become brittle. The mechanical properties are maintained in the long term.

Operating Temperatures

-20°C; +70°C

Recycled Product

No

Material

PVC

Recyclable

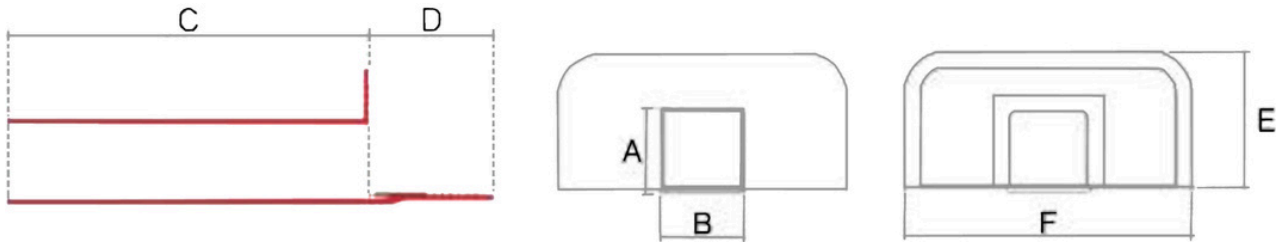
Yes

Wallbarn Ltd
Unit 16 Capital Business Centre
22 Carlton Road, South Croydon. CR2 0BS

IMS.T.1057.v2



Wallbarn - Technical Datasheet



Product Code	Description	A	B	C	D	E	F
RO-PVC-120-310-065-100-Z	PVC Corner Outlet H65m W100mm	65	100	427	150	155	340
RO-PVC-120-310-100-100-Z	PVC Corner Outlet H100m W100mm	100	100	427	150	155	280