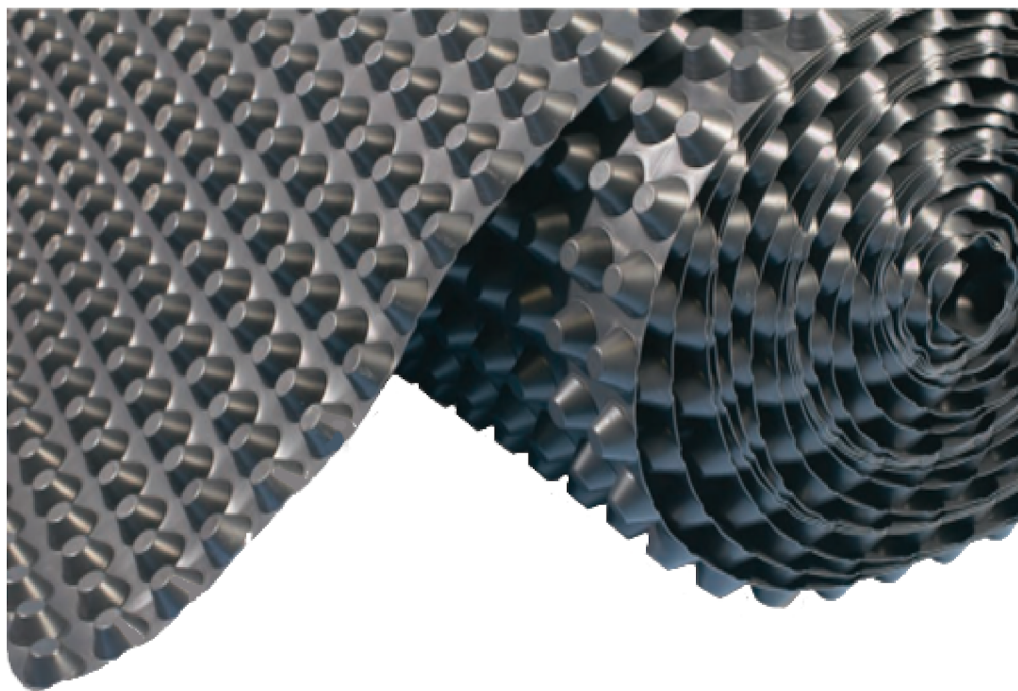




Wallbarn Protecto-Drain 20 Datasheet

The Protecto-Drain 20 Cavity Drain Membrane, is a 20mm studded membrane, suitable for Type C waterproofing and delivering a grade 3 environment to BS8102:2022 and NHBC Chapter 5.4. PD-20 has the highest drainage capacity membrane in the Wallbarn Waterproofing range. PD-20 is also an excellent radon barrier and has passed all the relevant tests for resistance to this gas. Radon barrier approved - Walls, Floors, Vaults, Tunnels and Above and below ground level Waterproofing applications.

| Technical Data | Result | Test Standards |
|------------------------------|-----------------------|----------------------------|
| Material | HDPE | N/A |
| Unit Weight | 1 Kg/m ² | N/A |
| Sheet Thickness | 1 mm | N/A |
| Stud Height | 20 mm | N/A |
| Colour | Black | N/A |
| Water tightness 60 kPa; 24h | Pass | EN 1928 |
| Working Temperature | -50°C to +80°C | N/A |
| Softening Temperature | 126°C | N/A |
| Tensile Strength MD | 416 N | BS 12311-2 |
| Tensile Strength CD | 488 N | BS 12311-2 |
| Resistance to Static Loading | >20 Kg | BS 12730 |
| Compressive Strength | 170 kN/m ² | BS EN ISO 25619-2 |
| Reaction to Fire | Class E | BS EN 13501-1:2007+A1:2009 |
| Type of Application | Type V | N/A |
| Life Expectancy | Lifetime of Structure | N/A |



Wallbarn Ltd
Unit 16 Capital Business Centre
22 Carlton Road, South Croydon. CR2 0BS

IMS.T.1005.v1

Phone : 0208 916 2222 Email : sales@wallbarn.com Website : www.wallbarn.com



Wallbarn Protecto-Drain 20 Datasheet

STORAGE & SHELF LIFE

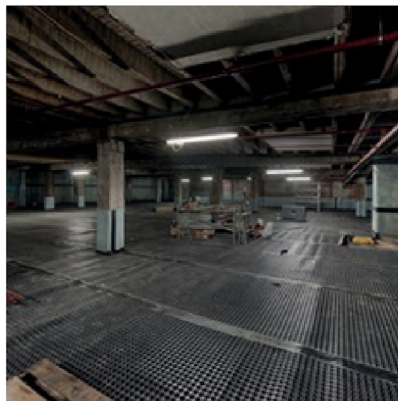
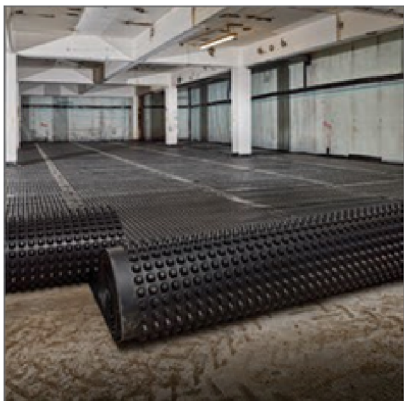
Store in an upright position, under cover and away from high temperatures and open flames. Shelf life is the lifetime of the structure, when stored and installed in line with recommendations.

HEALTH AND SAFETY

No specific hazards are likely to arise while using any Wallbarn Waterproofing Membranes or accessories; neither are classified as hazardous in respect to CHIP II Regulations 1999.

However, general precaution should be exercised in the use of drill etc. taking particular note of the special risk associated with working in confined spaces (basements) with restricted access/egress.

Wallbarn advise the use of appropriate PPE, including gloves, hard hat, goggles, high visibility jackets and steel toe cap boots.



Features

- Part of a type C cavity drain membrane system in line with BS8102:2022.
- Gives a high water void volume of 14 litres/m².
- Quick to install - easy to roll out along floors.
- Creates a dry, habitable living space in areas previously suffering from damp or wet conditions.
- Waterproof, salt inhibiting, root and contaminate resistant.
- Little or no damage to the existing structure.
- Low and high temperature tolerance.
- High grade material.
- Available in rolls of 2m x 20m and 2m x 10m* (*only 20 kg in weight)
- Ideal radon barrier membrane

Wallbarn Ltd
Unit 16 Capital Business Centre
22 Carlton Road, South Croydon. CR2 0BS

IMS.T.1005.v1

Phone : 0208 916 2222 Email : sales@wallbarn.com Website : www.wallbarn.com