



Operations & Maintenance Manual

HDPE Protecto-Drain Drainage Channel



Product : HDPE Drainage Channel measuring 1 metre in length with hot-dip coated steel grating and end covers.

Application : Linear drainage channel for collecting and draining surface water on pedestrians and lightly trafficked areas.

General Properties	Technical Data	Test Method
Width of channel(inside/outside)	95mm/120mm	Manufacturer's declared Value
Height of channel(inside/outside)	72mm/92mm	Manufacturer's declared Value
Cross-section of the channel	Ø 70mm	Manufacturer's declared Value
Length of channel	1000 mm	Manufacturer's declared Value
Unit weight of channel	1,250 kg	Manufacturer's declared Value
Class of loadability	EN 1433	A15
Installation category	EN 1433	type M (needs support)
Applicable concrete quality	EN 206-1	C20/25
Applicable concrete quality in case of frost danger	EN 206-1	C30/37 XF4
Min. dimensions of concrete bedding	EN 206-1	X = min 10 cm; Z = min 10 cm.

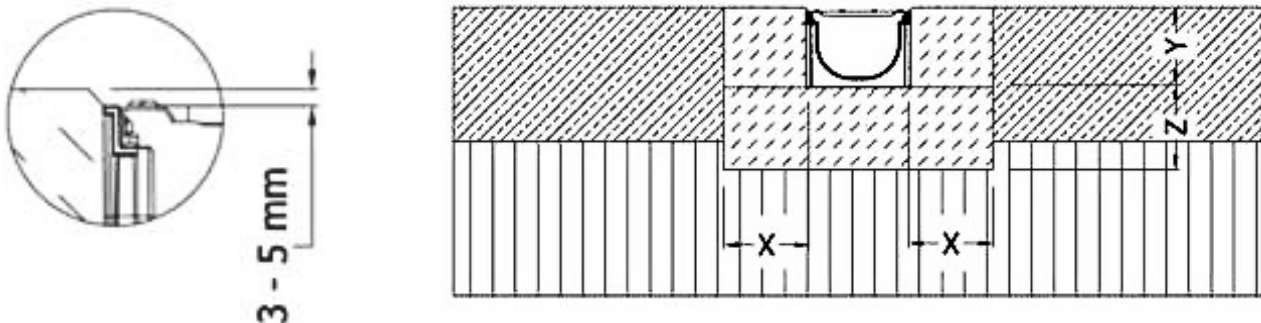


HDPE Protecto-Drain Drainage Channel

Storage	On pallets under dry conditions, protected against atmospheric exposure and heat sources.
Health & Safety	No labelling required in accordance with the relevant regulation (EC) No. 1907/2006 of the European Parliament and of the Council (REACH).
Guarantee	In accordance with the current legislation and the conditions of the distributor. The observation of the application rules of the product and presentation of the invoice constitute a prerequisite for possible future warranty claims.

This datasheet corresponds to our current knowledge, experiences and general information on the subject, but may be revised as new knowledge and / experience becomes available. It does not imply any legally binding assurance or obligation. The product possesses the given characteristics. Please refer to the LIMITED WARRANTY TERMS offered by Wallbarn Ltd. Since all variations of end usage of the product cannot be anticipated, it is the designer and end users' responsibility to ensure the suitability of this product for the particular purposes / installations.

Installation



Mark out a trench that is wide enough for your channel drain and at least 100mm of concrete backfill on each side to hold it firmly in place (see illustration, X/Z values). Prepare the base. The channel drain should be assembled after connecting the two half-circle pieces and fixing them to the bottom of the channel drain with four screws. To connect the outlet to a main drain or soakaway, the bottom of the channel can be pierced with a hammer at the pre-marked sections. Lay the channel drain lengths into the trench, starting with a full length at the lowest point, and connect them up, adjusting the base layer as needed to allow for a fall of 5mm for every 1m length of drain. The top of the channel drain grate should sit at least 2mm below the surface level. Add end caps as needed. Backfill around the channel drain. The channel can be cleaned by removing the gratings.



Wallbarn Ltd
Unit 16 Capital Business Centre
22 Carlton Road, South Croydon. CR2 0BS

IMS.T.1087.v2



HDPE Protecto-Drain Drainage Channel

Composition

The channel is composed of high-density polyethylene (HDPE). HDPE is a durable and versatile material that is widely used in various construction and environmental applications. HDPE offers excellent physical properties, such as high tensile strength, impact resistance, and flexibility, ensuring longevity and performance. Additionally, HDPE is chemically inert, meaning it is resistant to chemical degradation and does not release harmful substances into the environment. This composition ensures that this drainage channel can withstand exposure to moisture, UV radiation, and other environmental factors while effectively managing water drainage. The cover is made from durable galvanized steel.

Key Features & Benefits

- High-quality, durable materials.
- Strong, robust channel design, with durable galvanised cover.
- Lightweight design is simple and fast to install, 100% recyclable.
- Efficient surface water drainage for a wide variety of applications.
- Durable galvanised steel cover protects channel from traffic damage.
- Channels can be easily fitted together to create one long channel.

Packing & Delivery

Protecto-drain Drainage Channel is sold individually or as a kit with three channels and accessories. Maximum of 54 channels per pallet.



Wallbarn Ltd
Unit 16 Capital Business Centre
22 Carlton Road, South Croydon. CR2 0BS

IMS.T.1087.v2

Phone : 0208 916 2222 Email : sales@wallbarn.com Website : www.wallbarn.com



HDPE Protecto-Drain Drainage Channel

Maintenance Details

Protecto-drain Drainage Channel are designed to be installed and not disturbed in the long-term, except for the easy removal of the galvanized steel grate for inspection and cleaning.

General Health & Safety with HDPE

When working with HDPE Protecto-drain Drainage Channel, it's important to consider the following health and safety measures:

1. **Sharp Edges:** HDPE may have sharp edges during the installation process. Take precautions to avoid cuts or abrasions by wearing appropriate gloves and handling the materials with care.
2. **Dust and Particulate:** During cutting or installation, HDPE materials and galvanised steel may generate dust or small particulate matter. Use respiratory protection, such as dust masks, when working in enclosed or poorly ventilated areas to minimize inhalation of particles. Protective eyewear should always be worn when cutting this product to size.
3. **Fire Safety:** HDPE is a combustible material and should be kept away from open flames or high heat sources. Ensure proper fire safety precautions are in place, especially when using equipment that generates sparks or heat. Galvanised steel poses no fire risk.
4. **Compatibility with Adhesives and Sealants:** If using adhesives or sealants during installation, follow the manufacturer's instructions and handle them in accordance with their safety guidelines. Ensure proper ventilation and use suitable PPE to protect against potential chemical exposures.
5. **Site-Specific Safety Measures:** Each construction site may have unique safety requirements and hazards. Conduct a thorough site assessment to identify potential risks, implement appropriate safety measures, and adhere to site-specific safety protocols.

Always refer to the product-specific safety data sheets (SDS) and installation guidelines provided by the manufacturer for detailed information on handling, storage, and safety considerations related to the HDPE Protecto-drain Drainage Channel being used. Additionally, comply with local health and safety regulations and guidelines to ensure a safe working environment.

Hazards Identification

Adverse physicochemical, human health and environmental effects : To our knowledge, this product does not present any particular risk, provided it is handled in accordance with good occupational hygiene and safety practice.

First Aid Measures

In event of cuts or injury, wash out wound with plenty of clean water. Seek medical attention.



Wallbarn Ltd
Unit 16 Capital Business Centre
22 Carlton Road, South Croydon. CR2 0BS

IMS.T.1087.v2



HDPE Protecto-Drain Drainage Channel

Fire-Fighting Measures

These products do not constitute a fire hazard. Use extinguishing media appropriate to the surrounding fire conditions.

Accidental Release Measures

Damaged product can be taken up and disposed of to landfill as inert waste if necessary; however recycling is the preferred method of disposal. As supplied, the products are not classified as hazardous.

Handling & Storage

When handling the pedestals, due regard should be paid to the risks outlined in the Manual Handling Operations Regulations 1992. Appropriate PPE should be used.

If cutting the base of the pedestal with a saw, appropriate measures to control dust and debris should be used. The product should be stored in a safe place out of strong weather conditions.

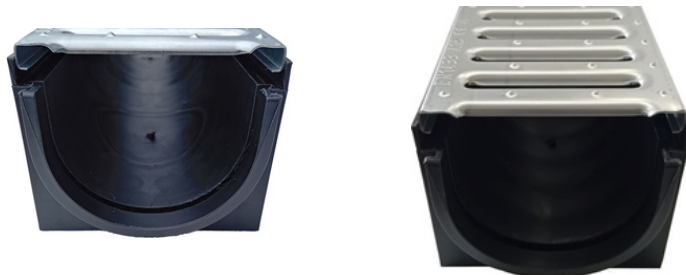
Wear suitable protective clothing e.g. overalls, gloves and safety boots to reduce the chances of physical injury while using this product.

Ecological Information

Subsequent to manufacture, this is a stable product with no known adverse environmental effects.

Disposal Considerations

Dispose of this product at any approved solid waste disposal site but recycling is best and recommended method of disposal. Wallbarn Mega Balance pedestals are made from virgin fibre Polypropylene and therefore will make for a higher quality recycled product. Disposal of the product should be in accordance with any local or national regulations although recycling is preferred.



Wallbarn Ltd
Unit 16 Capital Business Centre
22 Carlton Road, South Croydon. CR2 0BS

IMS.T.1087.v2

Phone : 0208 916 2222 Email : sales@wallbarn.com Website : www.wallbarn.com



WARRANTIES

A Limited Warranty exists that the products will comply with the test data as laid out in this document for a period of 15 Years. Warranty is limited to replacement of products which have been installed in the correct manner and for the correct purpose only. Warranty is limited to the value of the cost price of the materials only, not replacement costs or any other labour cost.

Under no circumstances shall Wallbarn Ltd be held responsible or liable for any incidental, consequential, indirect, special, punitive or any other damage (including, but not limited to, loss of profits, loss of sales, loss of start-up, loss or reduction of work).

This Limited Warranty covers our pedestals on condition that the Installation and Care & Maintenance Instructions are followed, and are installed according to Wallbarn Ltd guidelines.

See Terms and Conditions of the Warranty and Scope of the Guarantee below for other exclusions and limitations of this Warranty.

1) WARRANTY TERMS AND CONDITIONS

1.1 Complaints are physically examined by Wallbarn Ltd.

1.2 Complaints / claims should be filed in writing to Wallbarn Ltd.

1.3 Proof of purchase of the rails/joists should accompany the written complaint / claim. Complaints / claims without the appropriate documentation will not be considered.

1.4 The company examining complaints (or its representatives) reserves the right to check the pedestals in the place of installation, the manner they have been installed and obtain details of the care and maintenance programme carried out before giving considering to the complaint/claim.

1.5 The complaint / claim is only valid if the products are installed in the territory that the original purchase was made.

1.6 Wallbarn Ltd reserves the right to either repair the defect or to offer material free of charge to the customer.

The above guaranteed lifetime of the pedestal exists only where the Products have been installed in the correct and proper manner.

Wallbarn Ltd

IMS.T.1087.v2

**Unit 16 Capital Business Centre
22 Carlton Road, South Croydon. CR2 0BS**

Phone : 0208 916 2222 Email : sales@wallbarn.com Website : www.wallbarn.com



2) VISUAL APPEARANCE WARRANTY ON DELIVERY

Each pedestal is carefully inspected by our quality control team personnel prior to leaving our factory to ensure they are defect free. We urge Customers and the installers to inspect each pedestal prior to installation. This Limited Warranty does not extend to cover defects in pedestals on delivery after installation has taken place.

3) SCOPE OF GUARANTEE

3.1 This guarantee is issued in accordance with and is subject to the laws of England & Wales.

3.2 Obvious defects in the pedestal should be communicated to the supplier within 30 days from the delivery date of goods on site/warehouse. Claims regarding obvious defects after this period will not be considered.

3.3 To be able to make use of the Warranty the product – Mega Balance Pedestals- must be installed according to the Installation Instructions. Use fixings recommended and approved by Wallbarn Ltd as indicated in the appropriate technical documentation. The use of other types of fixtures not provided or approved by Wallbarn Ltd invalidates this Warranty.

3.4 If a claim is granted before installing the material, faulty pedestals are replaced free of charge.

3.5 No claims can be accepted after installing the material if the buyer could have detected the defects before installation. This Warranty does not cover damage caused by third parties before installation.

TRANSPORT INFORMATION

The best method of transportation is strapped securely onto pallets.



KEY CONTACTS

Wallbarn Ltd.

Unit 16 Capital Business Centre,
22 Carlton Road,
South Croydon CR2 0BS

Tel: +44 (0)20 8916 2222

Fax: +44 (0)20 8916 2223

Email: sales@wallbarn.com

Web: www.wallbarn.com

APPENDIX A

The following table summarizes the products referenced in this document:

Product	URL
Protecto- Drain Drainage Channel	https://www.wallbarn.com/protection-drainage/drainage/drainage-channel-2/



APPENDIX B:

LIMITED WARRANTY

Wallbarn Ltd provides a limited warranty of 15 years for products. This Warranty corresponds to the performance and strength characteristics given in the published technical datasheets.

Wallbarn Ltd warranties that, under normal use and service conditions, and where the products have been installed in the proper manner, Wallbarn Ltd products shall be free from material defects in workmanship and materials, shall not crack, splinter, swell, rot or suffer structural damage from damp or fungal decay.

If a defect occurs within the Warranty Period, the Purchaser shall notify Wallbarn Ltd in writing and, after investigation and confirmation of the defect(s) by a Wallbarn Ltd representative, Wallbarn Ltd's sole responsibility shall be limited to replacement of the affected products or to refund the Purchaser up to the maximum value of the Sales Invoice.

This warranty is null and void if:

- The products are not installed in the proper manner as detailed in official Wallbarn Ltd product catalogues, installation guides and technical datasheets.
- The products are not used for the purposes they are intended, as detailed in official Wallbarn Ltd product catalogues, installation guides and technical datasheets.
- Excessive weights, higher than the maximum weight as detailed in official Wallbarn Ltd product catalogues, installation guides and technical datasheets are placed onto the products.
- The products are installed in contravention of any relevant building regulations, code or standards.
- Any relevant building regulations, code or standards, including fire safety regulations are breached on the project during the construction process.
- There is movement, distortion, collapse or settling of the supporting structure on which Wallbarn Ltd products are installed.
- Any abnormal natural event such as flooding, hurricane, earthquake, lightning, etc., occurs.



Wallbarn Ltd – Limited Warranty

This limited warranty does not cover any living product or any product which sustains life. This includes sedum and other plants and substrate mixes for M-Tray® and any other green roof system. The living and growing elements of M-Tray® and other green roof systems are specifically excluded from this Warranty.

This Warranty is limited to the maximum amount of the Sales Invoice and Wallbarn Ltd is not liable for any costs of examination, removal or installation of products. Wallbarn Ltd will not be responsible for any costs or expenses incurred during removal and replacement, including labour or transport costs.

This warranty is given only if the products are used for the purposes they are intended, as detailed in official Wallbarn Ltd product catalogues, installation guides and technical datasheets and are installed in the correct manner.

To make a claim under this Limited Warranty, the Purchaser should contact Wallbarn Ltd with a full report of the defects within the Warranty Period, including photographic evidence and proof of purchase. Any claim should be made to sales@wallbarn.com as soon as possible by the Purchaser.

Our Terms & Conditions of Supply can be found here
<https://www.wallbarn.com/terms-conditions-of-supply/>