

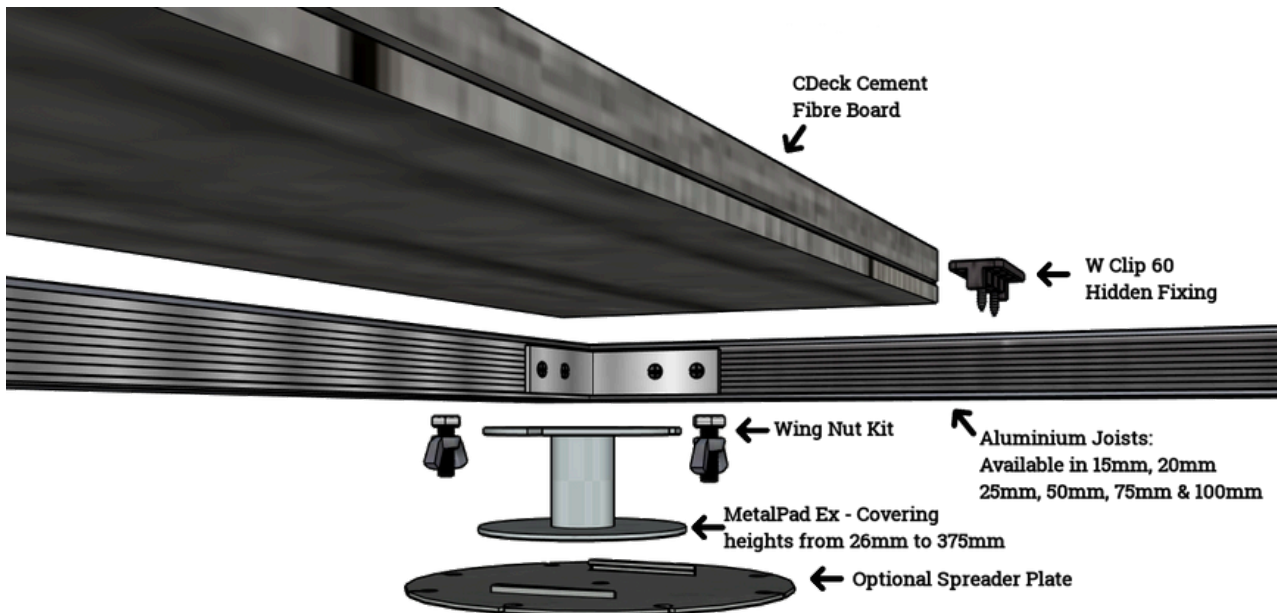
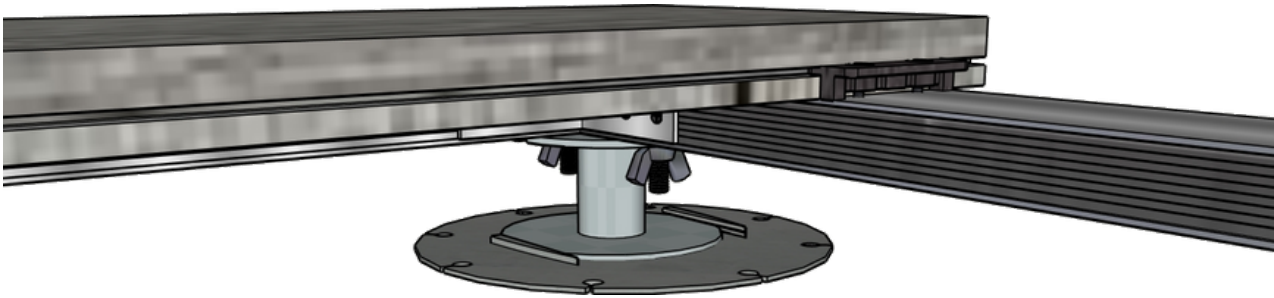


Wallbarn - Technical Datasheet

CDeck Cement Fibre Decking

Product Description

CDeck cement fibre board has been produced and tested to the updated British building regulation standards BS 8579:2020 design of balconies and terraces. CDECK cement fibre board will never burn, rot, rust, or warp. CDECK cement fibre board has been produced and tested to the updated British building regulation standards BS 8579:2020 design of balconies and terraces. CDECK cement fibre board will never burn, rot, rust, or warp. The system is highly suited to commercial areas and can handle public weight loads - ([See Test Report](#))



Wallbarn Ltd
Unit 16 Capital Business Centre
22 Carlton Road, South Croydon. CR2 0BS

IMS.T.1019.v1

Phone : 0208 916 2222 Email : sales@wallbarn.com Website : www.wallbarn.com



Physical and Chemical Properties

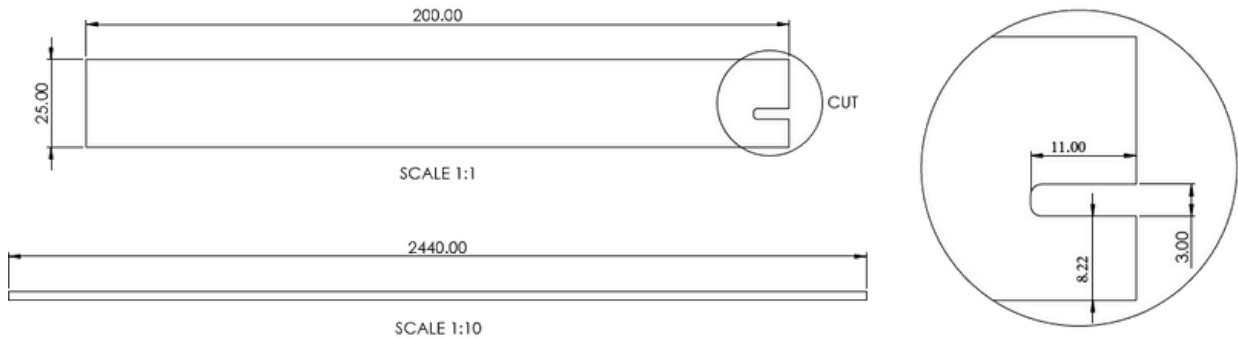
Density	
Density g/cm ²	≥ 1.4
Moisture Absorption %	≤ 28
Wet Swelling Rate %	≤ 0.25
Combustibility Performance	Grade A Non-combustible
Impermeability	After 24 hour inspection, no water droplets were found
Weatherability	
Anti-Frozen	100 times frozen melting circle, no cracking, no layer
Hot Rain Test	Fifty hot rain cycles, no cracks and delamination on the plate surface
Hot Water Test	The ratio of saturated flexural strength to saturated flexural strength is greater than or equal to 70% after 56 days immersion at 60 degrees Celsius
Immersion Drying Test	After 50 cycles of drying, the saturated flexural strength ratio is greater than or equal to 70%
Mildew Resistance Test	Antifungal property grade 0
Water Resistance	After 30 days, no cracking, no layering, no falling off, no swelling and no colour change observed
Acid Resistance	After 15 days, no cracking, no layering, no falling off, no swelling and no colour change observed
Alkaline Resistance	After 15 days, no cracking, no layering, no falling off, no swelling and no colour change observed
Environmental Protection Performance	
Non-Asbestos Test	It conforms to HJ/T223-2005 Standard and does not contain Asbestos
Radioactivity	Complying with GB6566-2021 Standard and meeting the requirements of Class A decorative materials. IRA is less than or equal to 1.0. Exposure index IR less than or equal to 1.0. Class A decorative materials, production, marketing and scope of application are unrestricted.
Mechanical Property	
Saturated Flexible Strength	≥13
Specification & Size	
Length (mm)	2440
Width (mm)	150 & 200
Thickness (mm)	25



Weight & Dimensions

BOARD DIMENSIONS : 25mm (H) x 200mm (D) x 2,440mm (L)

WEIGHT	
21 Kgs per Board	42 Kgs per sqm



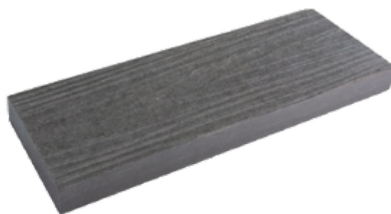
Composition & Materials

	PERCENT (BY WEIGHT)	CASE NO.	EC#	MITI NO.	KE-NO.
PORTLAND CEMENT	37%	65997-15-1	266-043-4	-	KE-29067
LIME	18%	1305-78-8	215-138-9	1-189	KE-04588
MICA	1.5%	12001-26-2	Unlisted	-	KE-25420
PERLITE	1.5%	93763-70-3	Unlisted	-	KE-05-0978
OTHER ADDITIVES	1.5%	N/A	N/A	N/A	215-171-9
QUARTZ	33.5%	14808-60-7	238-878-4	1-548	KE-29983

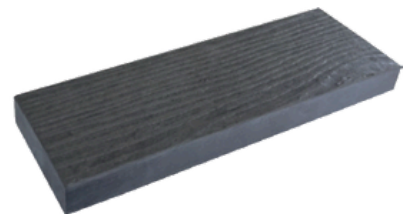
Colours



SILK GREY
Made to Order
Minimum 650sqm



DUSTY GREY
Made to Order
Minimum 650sqm



QUARTZ GREY
Stock Colour in the UK

Wallbarn Ltd
Unit 16 Capital Business Centre
22 Carlton Road, South Croydon. CR2 0BS

IMS.T.1019.v1

Phone : 0208 916 2222 Email : sales@wallbarn.com Website : www.wallbarn.com

CDeck-LOAD TEST

PAGE 1 OF 2



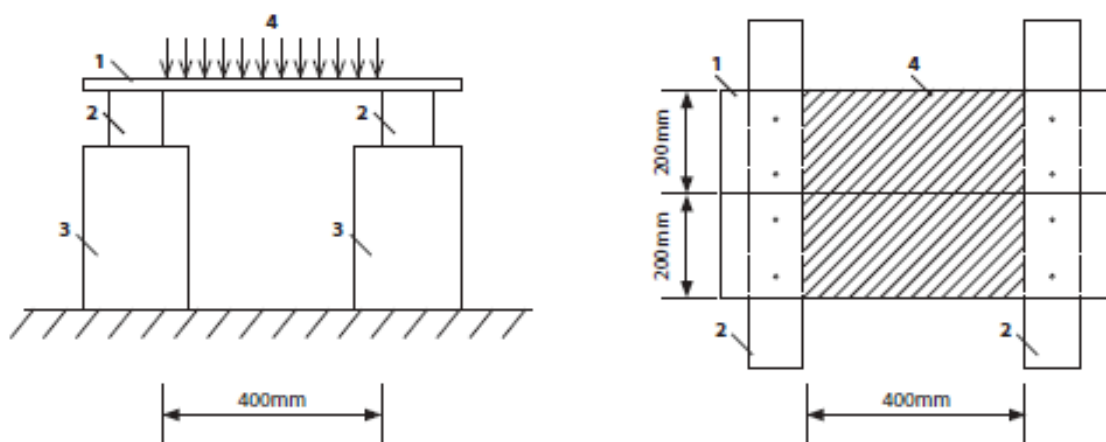
**FIRE PROOF A1 RATED
NON-COMBUSTIBLE
DECKING**

<p>WDa20191225001a4</p> <p>2440 x 200 x 25mm</p>	TEST RESULTS		
<p>TEST ITEM</p> <p>5 minutes. Uniform load test: The vertical downward uniform load is applied to two trestle slab specimens, and the load is loaded to failure at different stages for five minutes. The deformation in the middle span position is read and the failure condition of the specimen is recorded.</p>	<p>Applied Load Value (Kilos)</p>	<p>Applied Load Value (kN)</p>	<p>Average Value of Mid-span Deformation (mm)</p>
<p>BRIEF DESCRIPTION OF THE DEVICE</p> <p>The two trestle plate specimens are carried together, the trestle plate is fastened and installed on the skeleton with self-tapping screws, the skeleton is fastened to the rigid support, the test net span is 400mm, and the test surface width is 200 x 3 = 600mm. Install the meter at both ends of the middle bottom of the specimen and the data of sinking deformation is read.</p>	0.00	0.00	0.00
	101.97	1.00	0.187
	203.94	2.00	0.355
	305.91	3.00	0.529
	407.89	4.00	0.716
	509.86	5.00	0.912
	611.83	6.00	1.116
	713.80	7.00	1.307
	815.77	8.00	1.498
	866.76	8.50	1.593
	917.74	9.00	1.687
	968.73	9.50	1.825
	1019.72	10.00	1.946
	1070.70	10.50	2.068
	1121.69	11.00	2.199
	1172.67	11.50	2.333
	1223.66	12.00	2.489
	1274.65	12.50	2.625
	1325.63	13.00	2.826
	1331.75	13.06	Termination of Trial

CDeck-LOAD TEST

PAGE 2 OF 2

TEST LOADING SCHEMATIC DIAGRAM



1-Trestle Board Specimen. 2-Skeleton. 3-Rigid Support. 4-Uniform Load.



TEST PICTURE
Measured failure load

SPECIMEN LOAD - DEFORMATION CURVE GRAPH

