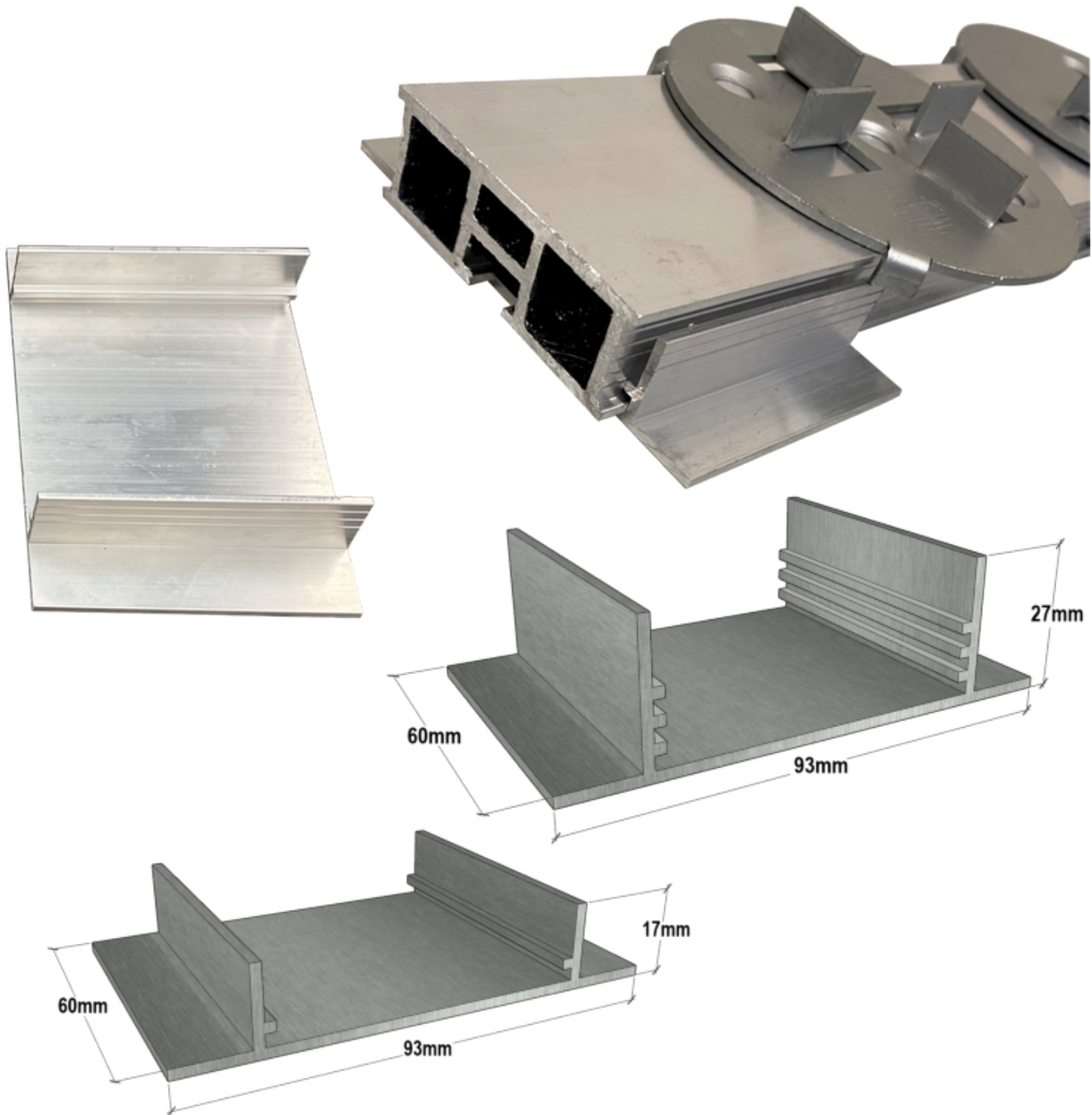


# Operations & Maintenance Manual

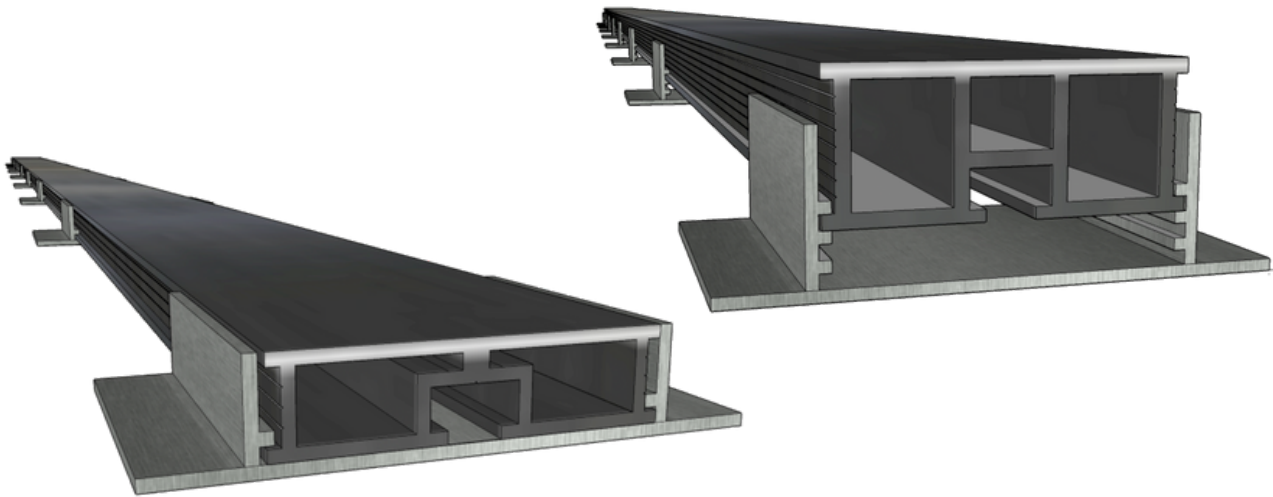
## Class A Ultra Low Rail Holders





Class A1 Fire Rated Aluminium 6063 T6

## PRODUCT DESCRIPTION

Wallbarn Class A1 Aluminium Ultra Low Rail Holders are made from high-grade extruded aluminium. Designed by Wallbarn and manufactured in the United Kingdom, they are suited to both paving and decking applications when used with applicable headpieces.



## PHYSICAL AND CHEMICAL PROPERTIES

	17mm Ultra Low Rail Holder	27mm Ultra Low Rail Holder
<b>Profile</b>		
<b>Material</b>	Aluminium 6063 T6	Aluminium 6063 T6
<b>Weight</b>	0.074kgs	0.081gs
<b>Height</b>	17mm	27mm
<b>Width</b>	93mm	93mm
<b>Length</b>	60mm	60mm
<b>Fire Classification</b>	Class A1 BS EN 13501-1 2018	



## Aluminium Ultra Low Rail Holder Profiles

**17mm**

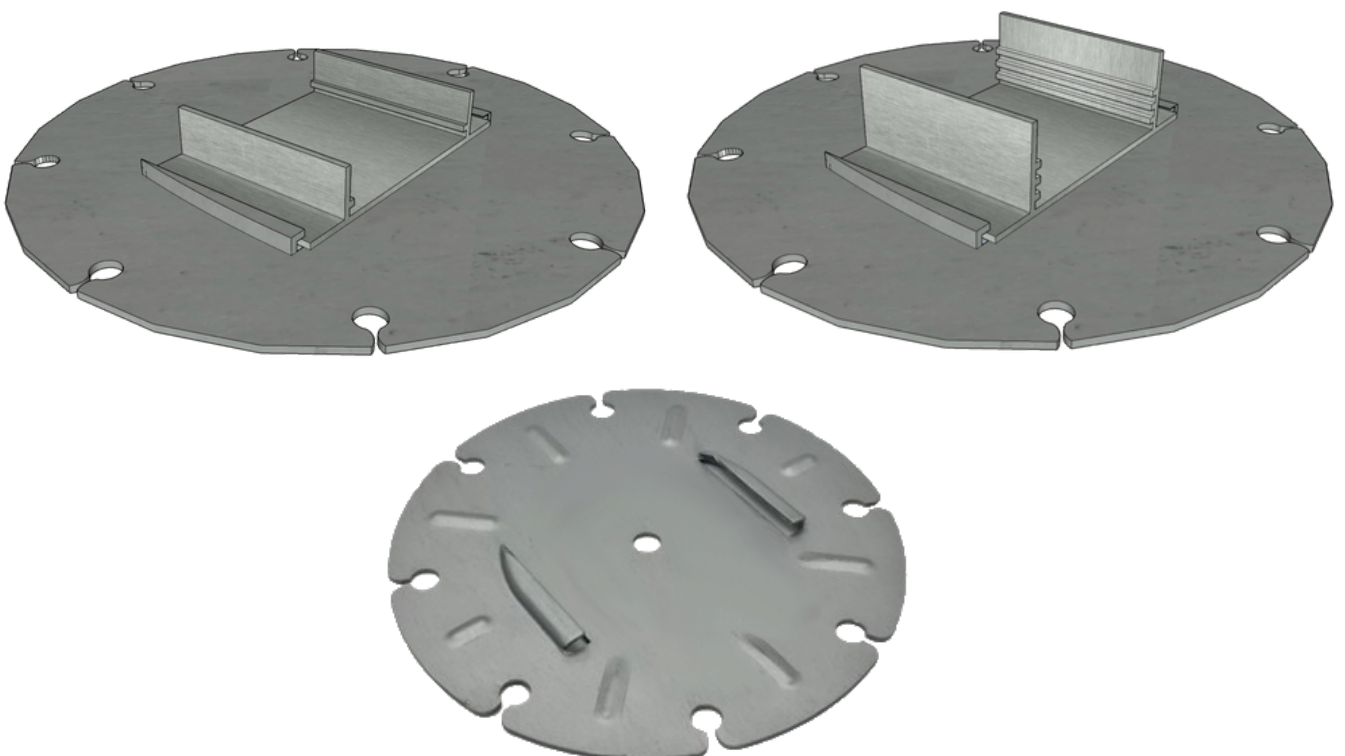


**27mm**



### Optional Spreader Plate

The Wallbarn Rail Holders are compatible with our Spreader Plate, which is ideal for vulnerable subfloors such as insulation. The Spreader Plate has a diameter of 185mm and disperses the load more effectively than the Rail Holder alone.





## PRODUCT INSTALLATION

The Wallbarn Ultra Low Rail Holder is designed for decking and paving applications, such as flat roofs, podium decks, balconies, terraces, and walkways. Wallbarn's aluminium rails/joists slide into the Rail Holders at the required step. For paving applications, select any of Wallbarn's aluminium rails, and the paving headpiece will fit onto the aluminium joist/rail. Simply lay slabs or tiles on top of this substructure system.

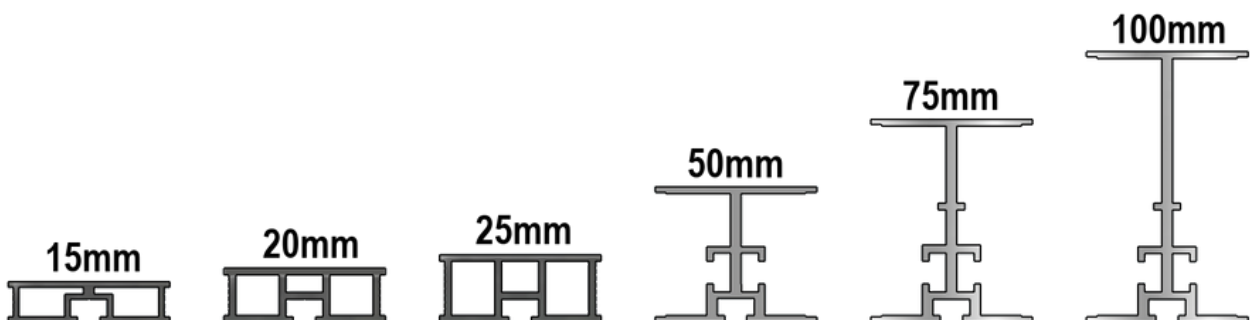
When using for decking applications, select any of Wallbarn's aluminium joists/rails or your own box rail/joist (as long as the width does not exceed 60mm). Then, boards can sit directly on these aluminium joists. Wallbarn has options for decking boards and fixings that meet Class A.

These Rail Holders are suitable for hard subfloors such as concrete. For vulnerable subfloors such as insulation, the Wallbarn Spreader Plate is available to reduce point loading and disperse weight over a 185mm diameter.

Before installation, it is recommended to store them away in the boxes they came in to reduce the chance of damaging the extruded profiles. When installing onto structural decks, ensure that the surface is strong enough to support the weight of the system. Additionally, it is important to adequately protect waterproofing membranes before installation to prevent point loading or puncturing of the membrane.

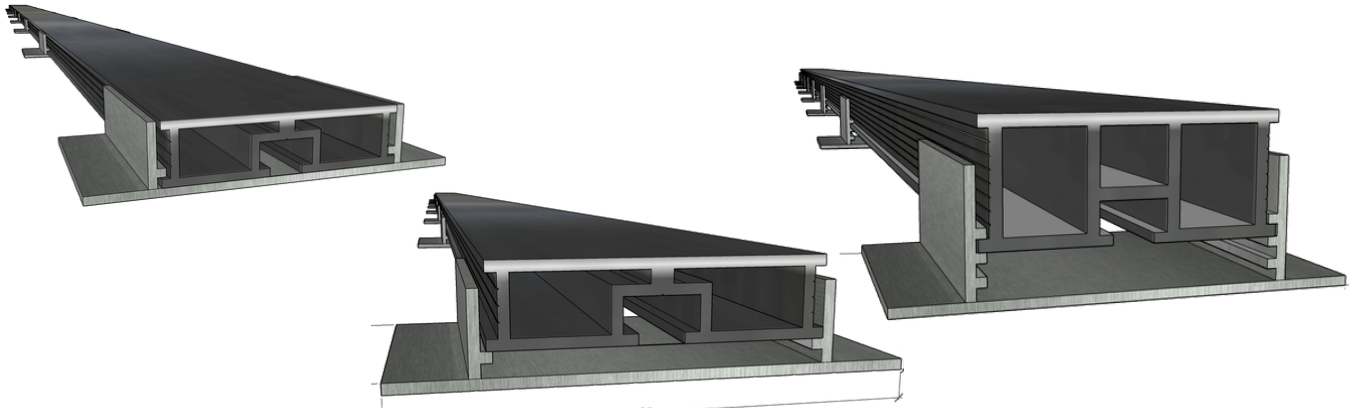
The spacing of these Rail Holders on the subfloor is based on varying factors, so it is best to speak to your Wallbarn representative to assist with calculating this

## Aluminium Rail/Joist Heights

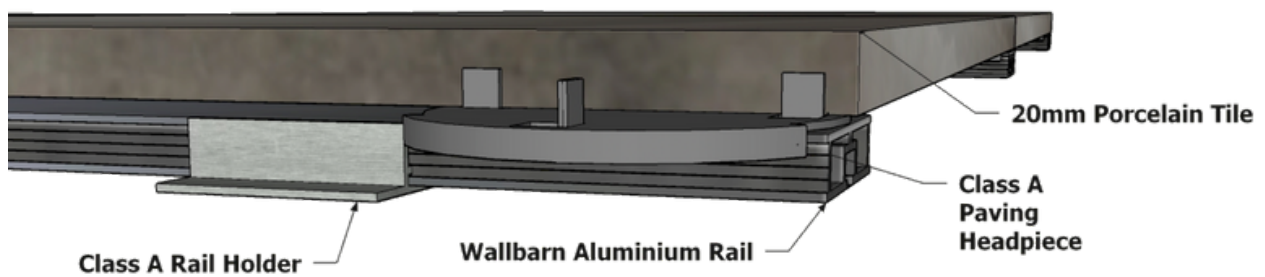


## PRODUCT INSTALLATION

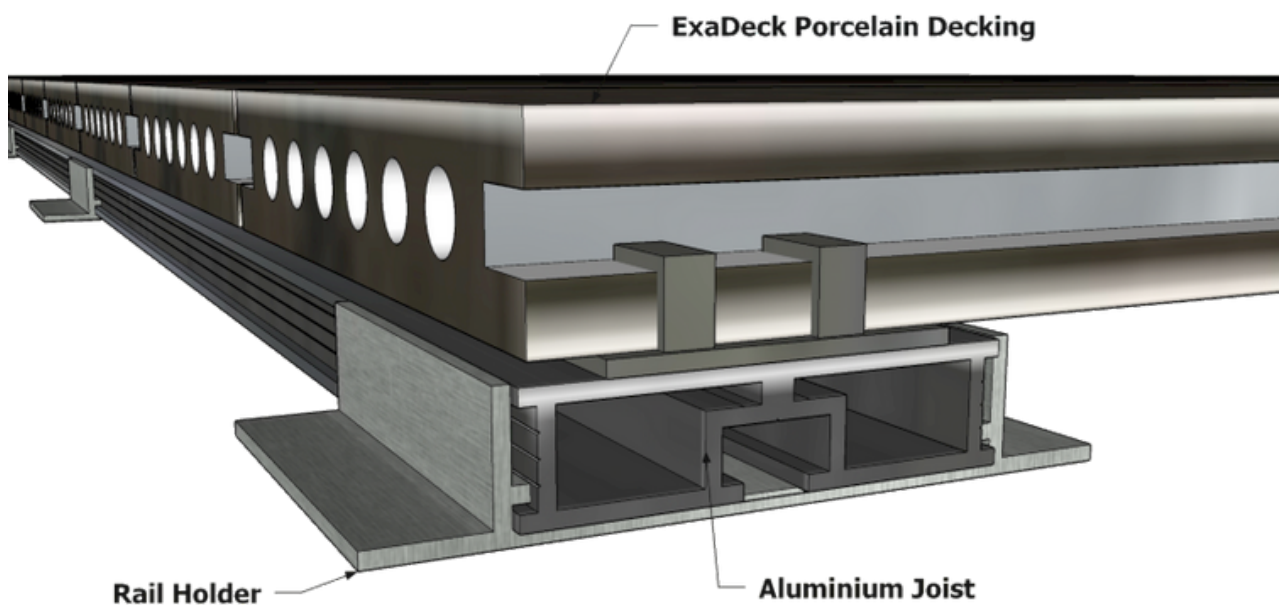
There are two different sizes of Ultra Low Rail Holders: the 17mm and the 27mm. Each of these has steps on the inside wall that allow the aluminium rail/joist to sit on, accommodating differing heights.



### Paving Buildup



### Decking Buildup





## CUTTING AND DRILLING

For cutting the Ultra Low Rail Holders, it is recommended to use premium blades specifically designed for cutting metal. This minimises sparks and reduces the risk of damaging the extruded profile of each Ultra Low Rail Holder, which is particularly important when working over insulation and waterproofing membranes. Additionally, note that damaged profiles may affect their ability to work seamlessly with our headpieces.

When cutting aluminium, taking certain precautions is essential to ensure safety and achieve accurate cuts. Here are some precautions to consider:

- **Personal Protective Equipment (PPE):** Wear appropriate PPE, including safety glasses or goggles, gloves, and a dust mask or respirator. This protects your eyes, hands, and respiratory system from metal shavings and dust.
- **Use the Right Tools:** Ensure you have the correct tools for cutting aluminium, such as a mitre saw, circular saw, or a specialised aluminium-cutting saw blade. Using the proper tools helps achieve clean and precise cuts.
- **Secure the Workpiece:** Securely clamp the aluminium workpiece to prevent it from moving or vibrating during the cutting process. This ensures stability and reduces the risk of accidents or inaccurate cuts.
- **Cutting Speed and Pressure:** Maintain a steady cutting speed and avoid applying excessive force or pressure. Let the cutting blade do the work, allowing it to cut through the aluminium at a controlled pace. Applying too much pressure can lead to rough cuts or blade damage.
- **Clear the Work Area:** Before cutting any metal, clear the work area of clutter and unnecessary materials. Sparks can be generated when cutting metal, so a clean area free of debris is crucial for fire safety.
- **Proper Waste Disposal:** Collect and dispose of aluminium shavings and waste material safely and appropriately. Aluminium shavings can be sharp and pose a risk to waterproofing membranes and insulation.

Always follow the manufacturer's guidelines and safety recommendations specific to the tools and equipment you're using. Additionally, consult local regulations and best practices for the safe handling and disposal of aluminium waste.



## **PRODUCT PERFORMANCE**

Wallbarn's Aluminium Ultra Low Rail Holders, when well maintained, are extremely long-lasting. They come with a product performance Limited Warranty of 15 years and boast a lifespan of up to 50 years.

With proper care and attention, they can look and perform well for many years beyond the warranty period. Please refer to the Limited Warranty details and conditions later in this manual for more information.

The pedestals are designed to maintain their shape and structural integrity when installed correctly.

## **MAINTENANCE DETAILS**

The Rail Holders have a relatively low maintenance requirement. Direct upkeep is minimal; however, one critical aspect to consider is ensuring the proper functioning of the drainage system on the sub-deck where the pedestals are installed.

It is crucial to prevent standing water accumulation in the area surrounding the pedestals. Water pooling can lead to various issues, including potential damage to materials over time through rust or corrosion, especially in metallic components. Moreover, it can compromise the stability and integrity of the overall structure.

To avoid such problems, regular inspections and maintenance of the drainage system are essential. This includes making sure that drainage channels or outlets are clear and unobstructed, facilitating efficient water flow. Removing debris or blockages from the drainage system will ensure proper water drainage and prevent pooling around the pedestals.

By focusing on maintaining the drainage system where the pedestals are installed, you contribute to the longevity and optimal performance of the system. This proactive measure reduces the risk of damage or deterioration due to excessive water exposure, fostering a healthier and more stable environment for the Rail Holder system.



## **HAZARDS IDENTIFICATION**

The primary hazards associated with these products are physical, notably during manual handling. A significant consideration is the generation of sparks during cutting processes.

When working with aluminium, using high-quality saws and drills is advisable to minimize the production of particles and sparks. Although aluminium is relatively easy to cut, the use of appropriate tools is crucial for reducing the risk of sparks.

Ensuring safety is paramount, and wearing proper protective clothing and equipment is essential when handling and cutting aluminium. This notably includes comprehensive eye protection, which is of particular importance. By adopting the appropriate safety measures and gear, you can significantly mitigate the potential risks involved in handling and cutting aluminium.

## **FIRST-AID MEASURES**

In case of cuts, it's imperative to first thoroughly wash the wound with plenty of clean water. Following this, seeking immediate medical attention is advisable. Given the risk of tetanus, a prompt medical evaluation is essential.

Should you experience any skin, eye, or respiratory irritation, securing medical attention promptly is critical. This is particularly vital for eye irritations, where immediate care can prevent serious complications.

A prompt medical evaluation is key to addressing any potential concerns effectively and ensuring you receive the appropriate treatment for any symptoms experienced.

## **FIRE-FIGHTING MEASURES**

Wallbarn Aluminium Ultra Low Rail Holders achieve fire resistance Class A1 according to standard BS EN 3501-01 : 2018, so they pose no fire risk.

Therefore, it can be easily installed in public areas and does not constitute a fire hazard. Use extinguishing media appropriate to the surrounding fire conditions.

## **HAZARD**

As supplied, the products are not classified as hazardous.





## **HANDLING AND STORAGE**

When handling the Rail Holders, it is essential to consider the risks outlined in the Manual Handling Operations Regulations 1992, and appropriate personal protective equipment (PPE) should be used. The pedestals will be delivered in cardboard boxes and possibly secured onto pallets depending on numbers purchased. It is important to utilise suitable lifting equipment operated by qualified personnel when moving the pallets.

To ensure safe storage, the pedestals should be stored in a dry environment. It is recommended to store them as they arrived in their boxes.

During the cutting process, it is crucial to implement measures to control metal particles and ensure proper ventilation. Additionally, always wear appropriate respiratory and full covered eye protection to safeguard against potential hazards.

## **DISPOSAL CONSIDERATIONS**

Recycling aluminium at the end of their life cycle is strongly recommended. Aluminium is a highly recyclable material, and recycling helps conserve resources and reduce environmental impact. By recycling aluminium, the material can be processed and used to create new products, reducing the need for virgin aluminium extraction and production.

When it comes to the disposal of this aluminium, they can be taken to an approved solid waste disposal site or metal recyclers. These sites are equipped to handle various types of waste materials, including metals like aluminium. Proper disposal ensures that they don't end up in landfills or contribute to environmental pollution.

However, it is important to note that the disposal process should adhere to local or national regulations. Different regions may have specific guidelines and requirements for the disposal of certain materials, including aluminium. These regulations are in place to protect the environment and human health.

To ensure compliance, it is recommended to consult the relevant local or national authorities or waste management agencies for specific guidance on the proper disposal of aluminium. They can provide information on designated disposal facilities, recycling programs, or any special instructions that need to be followed.

By following the appropriate local or national regulations for disposal, you can contribute to responsible waste management and help minimise the environmental impact of aluminium disposal.



## **WARRANTIES**

A Limited Warranty is provided, ensuring that the products will conform to the data presented in this document for a period of 15 Years. This Warranty is exclusively limited to the replacement of products that have been installed correctly and used for their intended purpose. The Warranty covers only the cost price of the materials and does not extend to replacement costs, labour, or any other associated expenses.

Under no circumstances will Wallbarn Ltd be liable for any incidental, consequential, indirect, special, punitive, or any other damages, including but not limited to, loss of profits, sales, startup costs, or reduction of work.

The expected lifespan of Wallbarn's Aluminium Fixed Height Pedestals is up to 50 Years. This Limited Warranty applies provided that the Installation and Care & Maintenance Instructions have been adhered to and the pedestals have been installed according to Wallbarn Ltd's guidelines.

For further details on exclusions and limitations of this Warranty, please refer to the Terms and Conditions of the Warranty and the Scope of the Guarantee sections below.

### **1) WARRANTY TERMS AND CONDITIONS**

1.1 Complaints are physically examined by Wallbarn Ltd.

1.2 Complaints / claims should be filed in writing to Wallbarn Ltd.

1.3 Proof of purchase of the rails/joists should accompany the written complaint / claim. Complaints / claims without the appropriate documentation will not be considered.

1.4 The company examining complaints (or its representatives) reserves the right to check the pedestals in the place of installation, the manner they have been installed and obtain details of the care and maintenance programme carried out before giving considering the complaint / claim.

1.7 The complaint / claim is only valid if the products are installed in the territory that the original purchase was made.

1.8 Wallbarn Ltd reserves the right to either repair the defect or to offer material free of charge to the customer.

The above guaranteed lifetime of the Products "Fixed Height Pedestals" exists only where the Products have been installed in the correct and proper manner.



## **2) VISUAL APPEARANCE WARRANTY ON DELIVERY**

Each pedestal undergoes an inspection by our quality control team prior to leaving our factory, ensuring they are free from defects. We strongly urge both Customers and installers to carefully inspect each Rail Holder before installation. This Limited Warranty does not cover defects in pedestals once installation has been completed.

## **3) SCOPE OF GUARANTEE**

3.1 This guarantee is issued in accordance with and is subject to the laws of the United Kingdom.

3.2 Obvious defects in the pedestals must be reported to the supplier within 30 days from the delivery date of the goods, whether on site or in the warehouse. Claims for obvious defects made after this period will not be considered.

3.3 To qualify for the Warranty, the Aluminium Fixed Height Pedestals must be installed according to Installation Instructions. Only use fixings that are recommended and approved by Wallbarn Ltd, as detailed in the appropriate technical documentation. The use of any other types of fixtures not supplied or approved by Wallbarn Ltd will invalidate this Warranty.

3.4 If a claim is approved before the material is installed, faulty Aluminium Fixed Height Pedestals will be replaced at no charge.

3.5 Claims cannot be accepted for defects that could have been identified by the buyer before installation. This Warranty does not extend to damage inflicted by third parties prior to installation

## **TRANSPORT INFORMATION**

The best method of transportation is strapped securely onto pallets.



## KEY CONTACTS

Wallbarn Ltd.

Unit 16 Capital Business Centre,  
22 Carlton Road, South Croydon CR2 0BS

Tel: +44 (0)20 8916 2222

Fax: +44 (0)20 8916 2223

Email: [sales@wallbarn.com](mailto:sales@wallbarn.com)

Web: [www.wallbarn.com](http://www.wallbarn.com)

## APPENDIX A:

The following table summarizes the documents and URLs referenced in this document:

Product	Website Location
Class A Ultra Low Rail Holders	<a href="https://www.wallbarn.com/fire-rated/rail-holders/">https://www.wallbarn.com/fire-rated/rail-holders/</a>
Class A Spreader Plate	<a href="https://www.wallbarn.com/fire-rated/headpieces-fixings/spreader-plate/">https://www.wallbarn.com/fire-rated/headpieces-fixings/spreader-plate/</a>
Paving Headpiece	<a href="https://www.wallbarn.com/fire-rated/headpieces-fixings/paving/">https://www.wallbarn.com/fire-rated/headpieces-fixings/paving/</a>
Aluminium Box Rail/Joist	<a href="https://www.wallbarn.com/substructure/box-rail/">https://www.wallbarn.com/substructure/box-rail/</a>
Aluminium I-Plus Beam	<a href="https://www.wallbarn.com/substructure/i-plus-beam/">https://www.wallbarn.com/substructure/i-plus-beam/</a>



## LIMITED WARRANTY

### APPENDIX B:

Wallbarn Ltd provides a limited warranty of 15 years for products. This Warranty corresponds to the performance and strength characteristics given in the published technical datasheets.

Wallbarn Ltd warrants that, under normal use and service conditions, and where the products have been installed in the proper manner, Wallbarn Ltd products shall be free from material defects in workmanship and materials, shall not crack, splinter, swell, rot or suffer structural damage from damp or fungal decay.

If a defect occurs within the Warranty Period, the Purchaser shall notify Wallbarn Ltd in writing and, after investigation and confirmation of the defect(s) by a Wallbarn Ltd representative, Wallbarn Ltd's sole responsibility shall be limited to replacement of the affected products or to refund the Purchaser up to the maximum value of the Sales Invoice.

### **This warranty is null and void if:**

- The products are not installed in the proper manner as detailed in official Wallbarn Ltd product catalogues, installation guides and technical datasheets.
- The products are not used for the purposes they are intended, as detailed in official Wallbarn Ltd product catalogues, installation guides and technical datasheets.
- Excessive weights, higher than the maximum weight as detailed in official Wallbarn Ltd product catalogues, installation guides and technical datasheets are placed onto the products.
- The products are installed in contravention of any relevant building regulations, code or standards.
- Any relevant building regulations, code or standards, including fire safety regulations are breached on the project during the construction process.
- There is movement, distortion, collapse or settling of the supporting structure on which Wallbarn Ltd products are installed.
- Any abnormal natural event such as flooding, hurricane, earthquake, lightning, etc., occurs.



## Wallbarn Ltd – Limited Warranty

This limited warranty does not cover any living product or any product which sustains life. This includes sedum and other plants and substrate mixes for M-Tray® and any other green roof system. The living and growing elements of M-Tray® and other green roof systems are specifically excluded from this Warranty.

This Warranty is limited to the maximum amount of the Sales Invoice and Wallbarn Ltd is not liable for any costs of examination, removal or installation of products. Wallbarn Ltd will not be responsible for any costs or expenses incurred during removal and replacement, including labour or transport costs.

This warranty is given only if the products are used for the purposes they are intended, as detailed in official Wallbarn Ltd product catalogues, installation guides and technical datasheets and are installed in the correct manner.

To make a claim under this Limited Warranty, the Purchaser should contact Wallbarn Ltd with a full report of the defects within the Warranty Period, including photographic evidence and proof of purchase. Any claim should be made to [sales@wallbarn.com](mailto:sales@wallbarn.com) as soon as possible by the Purchaser.

Our Terms & Conditions of Supply can be found here  
<https://www.wallbarn.com/terms-conditions-of-supply/>